



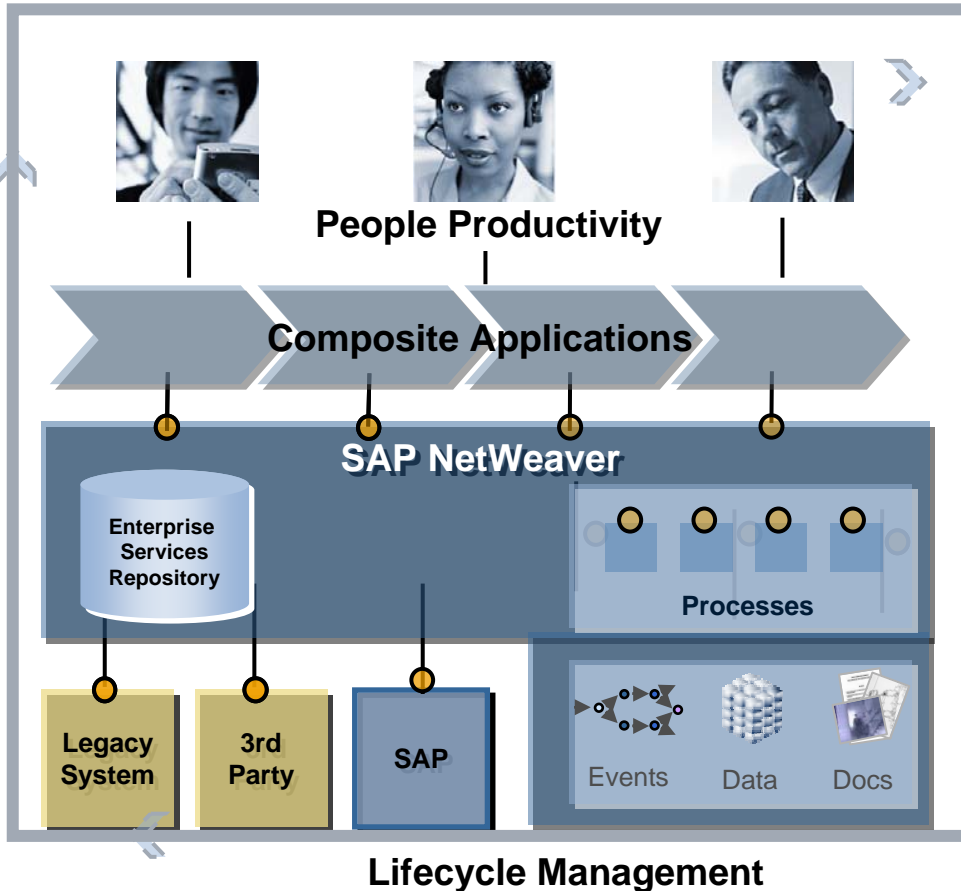
# Being Event-driven

Gunther Rothermel, Elvira Wallis

SAP NetWeaver Product Definition  
March 14th, 2006

- **Missing “chattiness” of today’s applications and systems – events remain unnoticed or without sufficient context**
- **Events are not actionable today – is this just another wave of notifications that we have to deal with?**
- **Events are not tangible – what kinds of business events are managed in my landscape today? Where and how do I set up new scenarios?**
- **The unknown – Do event-driven architectures affect my SOA strategy? What kind of “event management” capabilities do I really need?**

# SAP NetWeaver – Open Platform



## Platform capabilities

- Local event infrastructure
- Component-based architecture
- Event-based communication
- Business Task Management
- Business Activity Monitoring (BAM)
- ...

## SAP NetWeaver as event-driven, service-oriented and open platform for composites and SAP applications

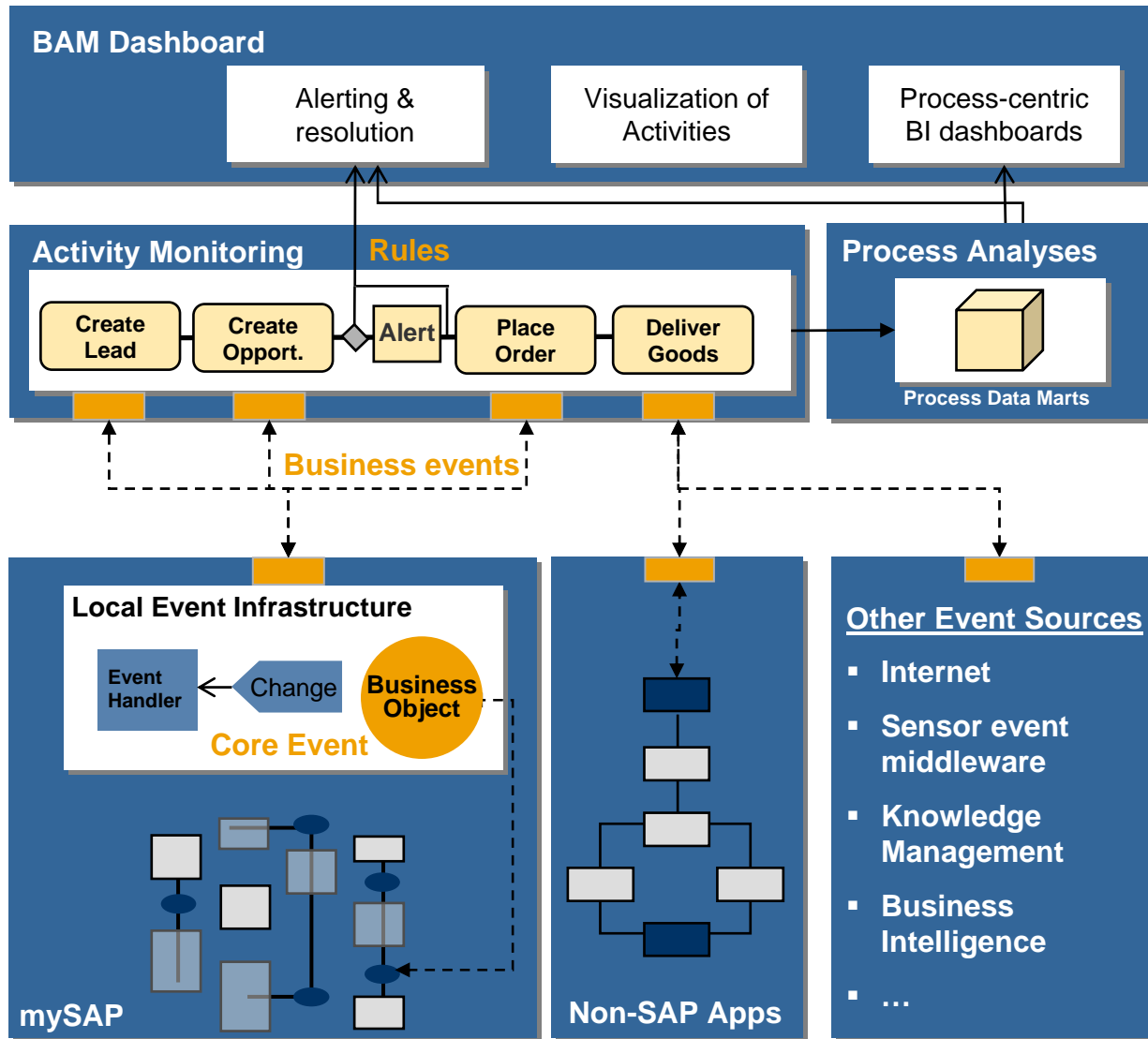
Technology partners complement the platform with event-processing capabilities

Built by Customers, partners and SAP

Component-based, service and event-oriented SAP applications



# Local Event Infrastructure and Business Activity Monitoring (BAM)



## BAM

### Dashboard

- Resolution templates
- Dashboards for visualization and analysis

### Activity Monitoring

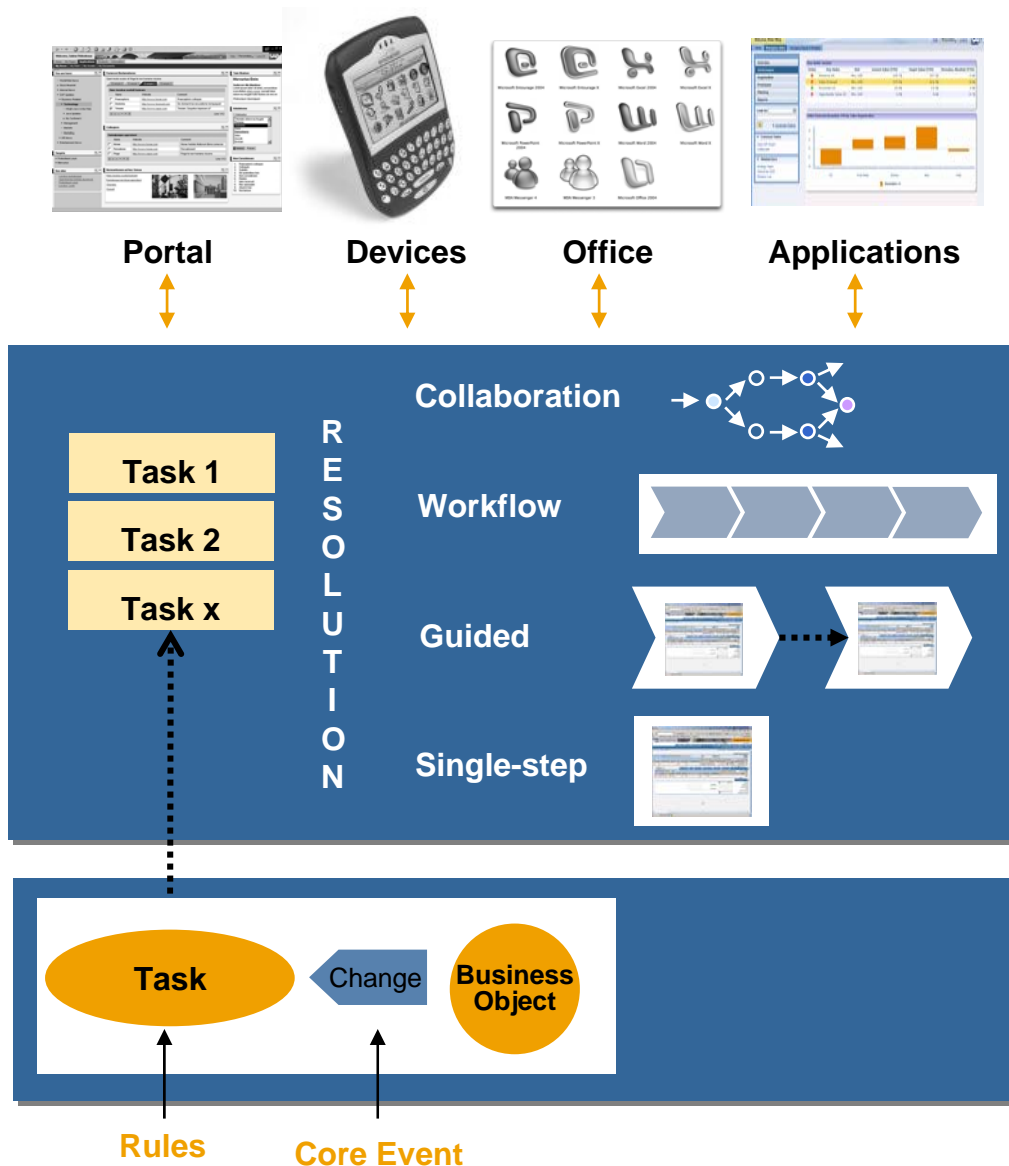
- Subscription and handling of business events
- Composition and monitoring of activities

### Process Analysis

### Local event infrastructure

- Embedded in mySAP Business Suite Applications
- Enables collecting, filtering and publication of events for inter-system usage
- 2000 + events and framework

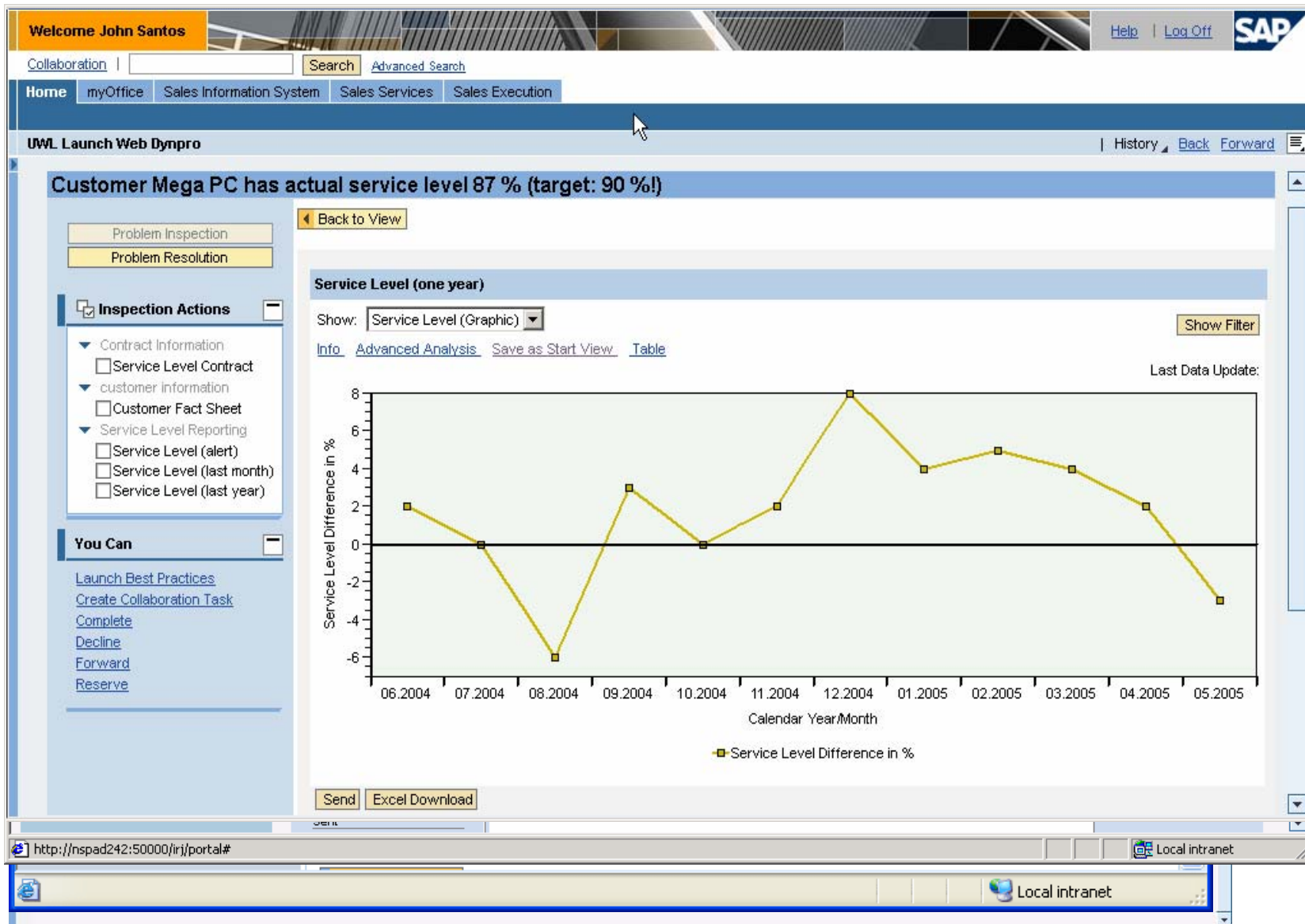
# Business Task Management



## Tasks – actionable events

- **Going the last mile to the user**
- **Contextual information**
- **One task handling, many consumers**
- **Embedded in Business Process Management**

# BAM Dashboard: Event Resolution, Guided Procedures, Analysis



# Activity Monitoring: Modeling of Activities, Assignment of Events

The screenshot displays the SAP BAM: Edit Integration Process interface. The main window shows a process flow diagram with a start node, an event node (ev...), two condition nodes, and a stop node. The right-hand side features a 'Process Outline' pane showing the process structure, a 'Properties' pane for the selected 'Event1' step, and a 'Container' table at the bottom.

**Integration Process Details:**

- Name: BAM
- Namespace: http://sapteched/XI/sessionid\_BPI150/instructor
- Software Component Version: SC\_INSTRUCTOR\_BPI150, 1.0 of sap.com
- Description: BAM

**Process Outline:**

- BAM
  - Event1
  - Condition
  - Event2
  - Condition

**Properties for Event1:**

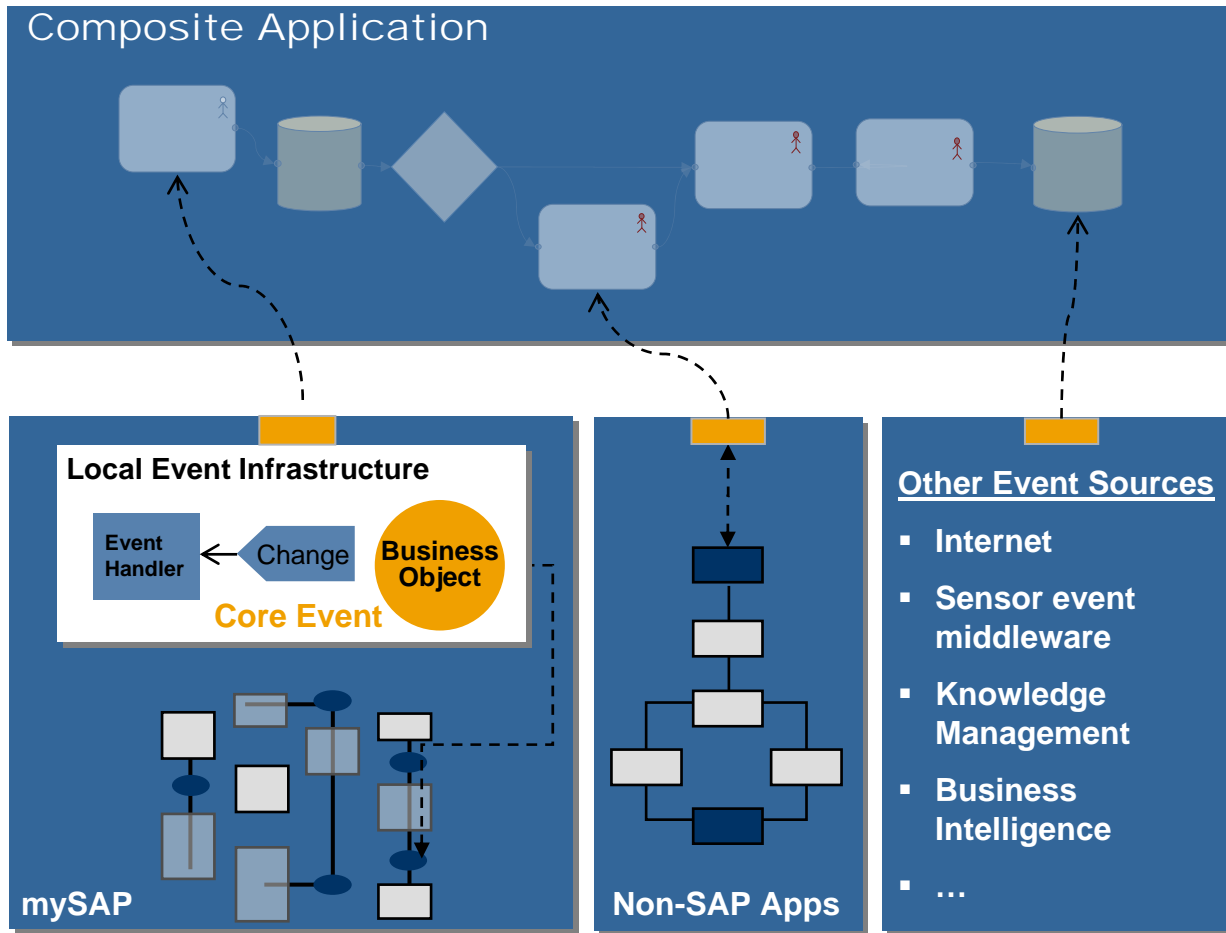
Name	Value
Step Name	Event1
Message	?
Start Process	<input checked="" type="checkbox"/>
Mode	Asynchronous

**Container Table:**

Name	Category	Type	Multiline	Container



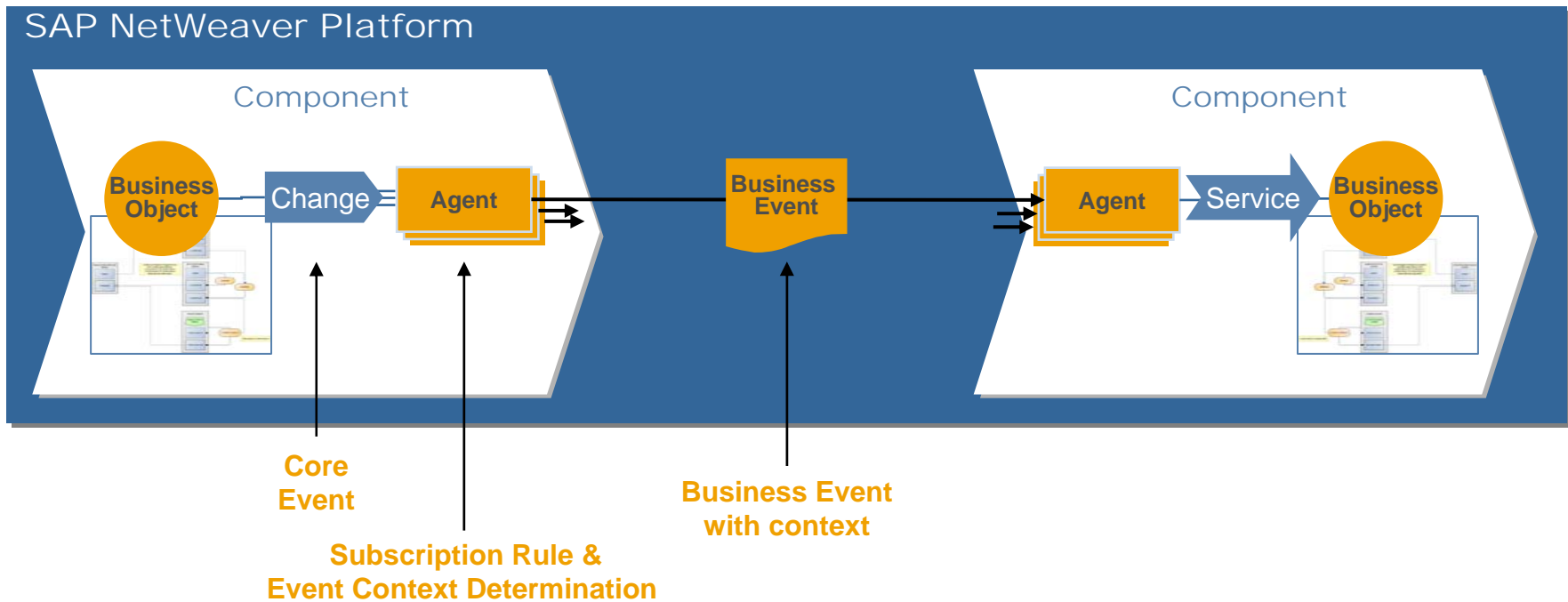
# Event-Driven Composite Applications



## Composites

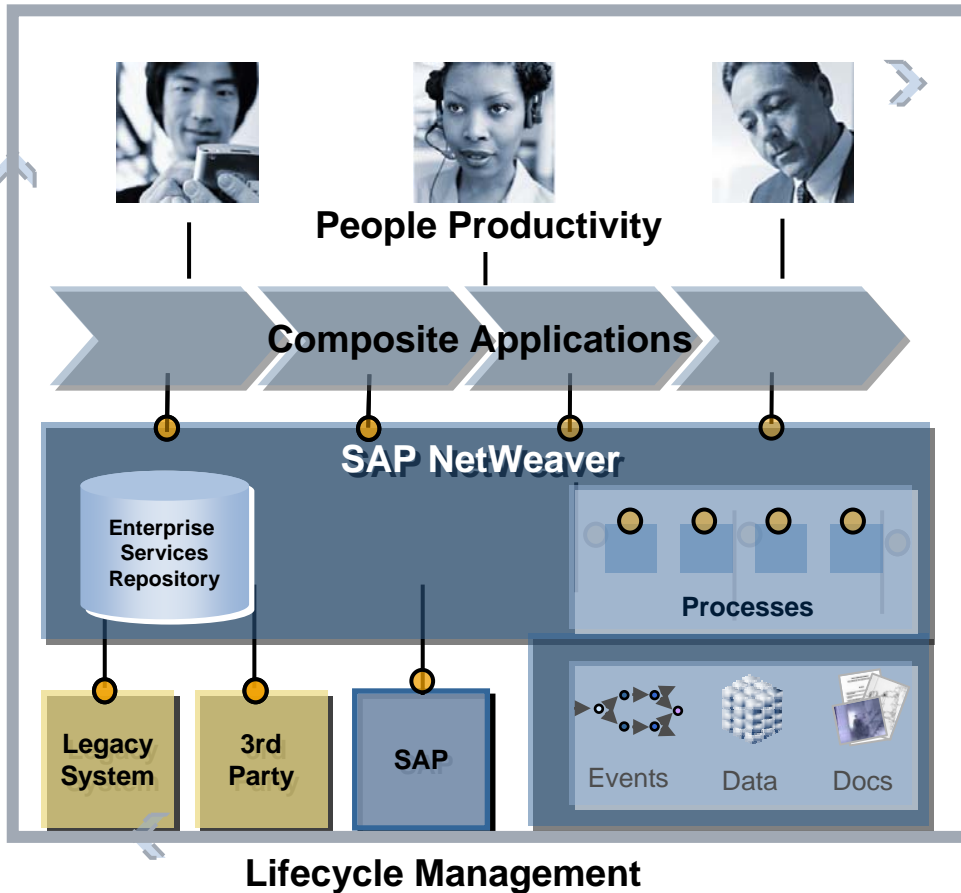
- Events as key artefacts of composites
- Enabling customers and partners to build event-driven composites on top of SAP NetWeaver
- Event and service-based communication

# ESA with SAP NetWeaver: Event-driven, component-based architecture



## Component-based Architecture

- Supports event and service-based communication
- One agent framework with different kinds of agents
- Enable Flexibility



## Summary

- Enable chattiness: event absorption, components, event-based communication
- Make events actionable: BAM, Task Management, Composites
- Make events tangible: modeling of activities, event metadata in repository, business content
- Reduce complexity: embedded capabilities plus open platform